

Annual Report for 2012



Serving Jesus Christ over 200 years

**326 Plains Church Road
Cranberry Township, PA 16066
(724) 538-8785**

CONGREGATIONAL MEETING PART II AGENDA

JANUARY 27, 2013

Prayer

Review of Minutes from November Congregational Meeting

Summary of Committee Reports for 2012—Committee Chairs

Budget for 2013

Old Business

New Business

- New Mission Study Task Force

Prayer

Our Mission Statement

Plains Presbyterian Church
Congregational Meeting Part I Minutes
Sunday, November 25, 2012
Church Sanctuary

Rev. Kimberly Merrill opened the meeting with prayer at 12:01 p.m.

Tim Roscoe, Clerk of Session, certified that there was a quorum of the membership present.

Rev. Kimberly asked the question do we want to vote on each office individually, or all the officers at once. The consensus from the congregation was to vote on all the offices at once.

Tim Roscoe, Chairman of the Nominating Committee thanked the members of the 2012 Nominating Committee, and placed the following names into nomination.

Elder Class of 2015 - Frank Aloï, Tony Poletì, Tim Roscoe

Deacon Class of 2015 – Tiffany Aloï, Matt Leisic

Auditor (Three Year Term) Arch Simpson

Nominating Committee 2013 Bev Magill, Steve Walter, Cathy Stafford, Jackie Leisic

Rev. Kimberly asked if there were any nominations from the floor. There were none.

Motion that the nominations be closed made by Joann Bark. Seconded by Steve Walter. Motion passed.

Motion by Frank Aloï to accept the officers as nominated. Seconded by Ron Carter. Motion Passed.

Melanie Sturrock briefly discussed the “Mission Study Task Force” and that there would be a couple of questionnaires and a luncheon to discuss the future direction of Plains Church and that the information generated would give the upcoming Pastor Nominating Committee the information that they need to proceed.

Motion to adjourn by Ron Carter, seconded by Lucas Carter. Motion Passed.

Rev. Kimberly closed with prayer 12:10 p.m.

Respectfully Submitted,

Tim Roscoe
Clerk of Session

ELDER

Class of 2013

Ron Carter
Jason Holcomb
Rich Magill

Class of 2014

Sue Reed
Arch Simpson
Steve Solman

Class of 2015

Frank Aloï
Tony Poletì
Tim Roscoe

DEACON

Class of 2013

Amy Roscoe
Maggie Simpson

Class of 2014

Joann Bark
Eunice Guenther

Class of 2015

Tiffany Aloï
Matt Leisic

Plains Church Year End Statistical Report for 2012

Active Members as of 12/31/11 (as reported to the General Assembly) 120

Gains for 2012 + 7

Alex Carter	+1
Christen Duerring	+1
Ethan Leisie	+1
Erika Stafford	+1
Scott Taylor (Moved Back to Active Roll)	+1
Ernie & Nancy Jones (Transfer of Membership)	+2

Losses for 2012 – 21

<u>Deaths</u>	-3
Craig Gordon	
Dave Goehring	
Shirley Engel	

<u>Transfer of Membership</u>	
Paul Rogers	-1

<u>Removed upon Request</u>	
Aaron & Amie Graham	-2

<u>Removed from Active Roll</u>	
Matt Glaspey	-1
Christine Gordon	-1
Gerald & Lois Viney	-2
Tom & Kim Magill	-2
Craig Sproat	-1
Tara Leisie	-1
Tom, Peggy & Laura Beals	-3
Spencer Faruquee	-1
Linda Gillepsie	-1
Francis & John Sigmund	-2

Active Membership for 2013 106

Other Information

Baptisms in 2012

Parker Ryan Budney – April 22, 2012

No Marriages in 2012

Respectfully submitted,

Timothy G. Roscoe
Clerk of Session

2012 - ANNUAL REPORT of the CEMETERY ASSOCIATION

- * Outside contractors continue to mow the cemetery, plow snow and clear sidewalks. They are paid by the church.
Over \$1000 was saved this year due to the dry weather, less mowing and less snow-plowing.
- * There were five grave openings (1 cremation & 4 regular): Glenn McKinnis, Helen Leisie, Dave Goehring, Viola Baker and Shirley Engel.
- * A new mowing tractor was purchased for the church. The old mower was sold.
- * The driveway (at the back and south side of the church) was paved and paid by the cemetery - the church will reimburse part of the cost.

Respectfully submitted by,
Richard Magill, Cemetery Administrator

**FINANCIAL REPORT OF THE CEMETERY ASSOCIATION
YEAR ENDING DECEMBER 31, 2012**

Balance Carried Forward - 12-31-2011

\$11,984.64

Receipts:

Fidelity CD 001389004621	512.80	
Fidelity CD 001389005271	150.77	
NexTier CD 310305*	11.70	*closed/Jan
NexTier CD 427696	59.37	
Old Mower Sale	200.00	
Cashed in CD 427696	3000.16	
Cashed in CD 28901868 @ Fidelity	2593.45	
Cremation Grave Opening-McKinnis	100.00	
Grave Opening-Helen Leisie	200.00	
Grave Opening-Dave Goehring	200.00	
Reimbursement from church/paving	3500.00	
Checking Acct. Interest	3.62	
Total Receipts	10531.87	10531.87

Expenses:

New CD at Fidelity	3000.00	
Purchased new cemetery tractor	3021.00	
Paving of church driveway	9150.00	
Total Expenses	15171.00	15171.00

Balance as of December 31, 2012

\$7,345.51

Submitted by Treasurer, Beverly Magill

CURRENT CERTIFICATES OF DEPOSIT

Fidelity CD - #1389004621 -- \$20,000

Annual yield of 2.8% - monthly interest deposit to NexTier

Maturity Date: July 23, 2013

Fidelity CD - #00138900527 - \$10,000.31

Interest 1.73% - monthly interest deposit to NexTier

Maturity Date: October 17, 2015

Total Assets \$37,345.82

BOARD OF DEACONS

2012 Annual Report

Class of 2012

Tiffany Aloï
Tony Poletì

Class of 2013

Amy Roscoe
Maggie Simpson

Class of 2014

Joann Bark
Eunice Guenther

Election of Officers was held on December 13, 2011:

Moderator	Amy Roscoe
Treasurer	Tony Poletì
Secretary	Maggie Simpson
Missions	Tiffany Aloï

The Deacon serving on the Nominating Committee in 2012: Joann Bark

Deacon Outreach:

- February and March – Presented Minutes for Mission for One Great Hour of Sharing; food collections for Evans City Food Cupboard.
- April – Delivered Easter flowers to shut-ins; mailed snacks and treats to college students.
- May – Graduation gifts for high school graduates; gifts of candy given to all the women in the congregation in celebration of Mother's Day; hosted the Strawberry Festival after church on Sunday, May 20th.
- June – Gifts of candy given to all the men in the congregation in celebration of Father's Day.
- July – The Deacons served Communion on Sunday, July 1st.
- October – Food collections for Evans City Food Cupboard.
- December - Delivered poinsettias to shut-ins.

Ministry to Others:

- Home Touch materials sent out weekly/monthly to shut-ins
- Card Ministry - Thinking of You and Birthday Cards were sent to shut-ins; Get Well and Sympathy cards were sent to church members; birthday cards were sent to toddlers ages 1-3; birthday cards were also sent to everyone listed in the Plain Talk.
- Soup and Bread Ministry was carried by the Deacon of the Month to church members returning from hospital stays.
- Baby gift of \$25 gift certificates to Babies 'R Us were given to new parents
- Baptism rose/bud vases were presented to all children baptized during 2012

Directed Local Church Mission Giving To:

- Evans City Food Cupboard
- Gleaners Food Bank
- Feed My Sheep - Zelienople
- Salvation Army
- Presbyterian Disaster Assistance
- Grace Memorial Hospital in Brazil
- Camping Association of the Presbyteries of Northwestern Pennsylvania (CAPNWP)

Directed Deacon Fund Giving To:

- The Lighthouse Foundation
- Evans City Food Cupboard
- City Rescue Mission in New Castle
- Grace Memorial Hospital in Brazil
- Presents for Patients
- Helping local families in need

Looking Ahead to 2013:

Class of 2013

Amy Roscoe
Maggie Simpson

Class of 2014

Joann Bark
Eunice Guenther

Class of 2015

Tiffany Aloï
Matt Leisie

The Deacons
Plains Presbyterian Church
326 Plains Church Road
Cranberry Township, PA 16066

To the Members and Friends of Plains Presbyterian Church,

The Deacons of Plains Presbyterian Church are the “giving hands” for funds donated to our church by members and friends of the church. This year, as in past years, the Deacons have allocated funds to many worthy local and world wide missions. Whether it be someone from our church family or Presbyterian Disaster Relief, the Deacons stand ready to see to it that these funds are allocated judiciously and in the spirit of Christian giving. Serving as a Deacon from Plains Church is a blessing. If you are so moved by God’s call to serve His Church, I am sure you would find the Deacons work fulfilling.

Please find the attached monthly treasurers reports from the Deacons of Plains Presbyterian Church for your review. Monthly bank statements from First National Bank, Hermitage, PA- Seven Fields branch will verify these numbers. These statements have been submitted to the audit committee for review. Tony Poleti- Treasurer for the Deacons of Plains Presbyterian Church, Cranberry Township, PA, has respectfully submitted this report.

Tony Poleti
January 05, 2013

DEACONS TREASURY ~ MONTHLY REPORT 2012

JANUARY 2012

Beginning Balance \$644.72
Deposit 1/3/2012 \$1,521.00
Balance \$2,165.72
Lighthouse Found. \$ 500.00
Balance \$1,665.72

FEBRUARY 2012

Beginning Balance \$1,665.72
January Interest .01
Total \$1,665.73
Donation-Member \$500.00
Balance \$1,165.73
D.Solman-Retreat \$100.00
Balance \$1,065.73
Feb. Interest .03
Balance \$1,065.76

MARCH 2012

Beginning Balance \$1,065.76
March Interest \$.02
Balance \$1,065.78

APRIL 2012

Beginning Balance \$1,065.78
Amy Roscoe-Lowes \$ 52.89
Balance \$1,012.89
Home Touch \$ 43.80
Balance \$ 969.09
Etched in Glass \$ 14.00
Eunice G.(H.Touch)\$ 25.00
Eunice G.(G.Card) \$ 25.00
Balance \$ 905.09

MAY 2012

Beginning Balance \$ 905.09
April Interest \$.01
Balance \$ 905.10
Deposit \$ 445.00
Balance \$1,350.10
Amy Roscoe-Exp. \$ 187.64

MAY 2012 CONT.

Balance \$ 1,162.46

JUNE 2012

Balance \$ 1,162.46
Interest-June \$.01
Balance \$ 1,162.47

JULY 2012

Balance \$ 1,162.47
Interest-July \$.01
Balance \$ 1,162.48
Deposit \$ 385.00
Balance \$ 1,547.48
Janet G. deA \$ 500.00
Balance \$ 1,047.48

AUGUST 2012

Balance \$ 1,047.48
Interest- Aug. \$.01
Balance \$ 1,047.49

SEPTEMBER 2012

Balance \$ 1,047.49
Gift Card \$ 25.00
Balance \$ 1,022.49
Interest-Sept. \$.01
Balance \$ 1,022.50

OCTOBER 2012

Balance \$ 1,022.50
Guideposts \$ 17.22
Balance \$ 1,005.28
Deposit \$ 295.00
Balance \$ 1,300.28
City Rescue \$ 200.00
Balance \$ 1,100.28
Pres. Disaster \$ 200.00
Balance \$ 900.28
Pres./Patients \$ 50.00

OCTOBER 2012 (CONT.)

Balance \$ 850.28
Oct. Interest \$.01
Balance \$ 850.29

NOVEMBER 2012

Balance \$ 850.29
Presb. Disaster\$ 350.00
Balance \$ 500.29

DECEMBER 2012

Balance \$ 500.29
Amy R. \$ 57.24
Balance \$ 443.24

PLAINS PRESBYTERIAN CHURCH

Women's Circle Year End Report

BEGINNING BALANCE: \$ 215.40

INCOME:

Collections:	\$359.15
Donation-funeral lunch	150.00
Least Coin Collection (Jar in Narthex (\$11.15)	81.00

TOTAL INCOME \$590.15

TOTAL INCOME PLUS BEGINNING BALANCE: \$ 805.55

EXPENDITURES:

Evans City Unity Food Bank	\$250.00
Presbyterian Women	
Least Coin	81.00
Synod-Contingent and Membership	25.00
Blanket Fund	75.00
Gleaners Food Bank	100.00
Jackie Leisie-Salvation Army Shopping	50.00
Funeral Lunch Supplies-chicken, etc.	139.30

TOTAL EXPENDITURES: \$ 720.30

BALANCE: \$ 85.25

Joann Bark, Circle Treasurer, Dec. 2012

Mary-Martha Circle – 2012 Activities

The Mary-Martha Circle meets monthly for fellowship and devotions. All women of the church are Presbyterian women and are invited to join us at any time.

We take desserts to VOICE the first Sunday of each month. The budget allowance for VOICE does not permit them to spend money on dessert items.

In addition to the above we:

- coordinate the Blanket Sunday special offering in May,
- coordinate the Thank Offering in November,
- submit annual dues and the Fellowship of the Least Coin to Presbyterian Women,
- give donations to food banks twice a year,
- gave to the Salvation Army shopping day,
- coordinated refreshments for Coffee Connection in September,
- served a funeral luncheon for Craig Gordon,
- volunteer at Artisan Market Place in the Presbytery Office,
- give shawls and afghans to shut-ins and baby quilts to newborns,
- coordinate lunch-out for Presbyterian women twice a year.

INREACH/OUTREACH REPORT

In 2012, the operations of the Inreach/Outreach committee were somewhat limited. Currently, no active church members are participating. If you feel the call to share with the community what Plains Church is all about, and have ideas to help spread the word, please contact me at your earliest convenience.

Established an Open Group Page on Facebook – Please join and help promote the church online

Provided 2012 Coffee Connection Schedule, and will do the same for 2013

Participated in and encouraged more e-mail communications to promote church events and activities

Attended various Beaver-Butler Presbytery Meetings

Plan to issue a press release regarding our new Interim Pastor, Kimberly Merrill, in the very near future

Will replenish our stock of custom pens in the very near future

Respectfully Submitted,

Ron Carter, Inreach/Outreach Chair

rc411@zoominternet.net

724.772.7920

2012 ACTIVITY REPORT

Properties Committee

The following maintenance projects and improvements were completed:

CHURCH

- New shingles were installed on the church roof
- Church driveway was repaved with tar and chips/Spangler Bros.
- Purchased stone to repair remaining driveway
- Electrical maintenance to: receptacle circuit breaker, exit light bulbs, spot lights, music room lights, shed lights. Dilts installed new lamps and photocells on parking lot lights
- Worked with Todd Harris and insurance company to have manse, fellowship hall and church roofs inspected after the hail storm in July. The manse and Christian Education building roofs will be replaced with new shingles – the church roof will be replaced either partially or in total depending on a closer inspection
- Repaired and painted heat ducts in church stairway
- Repaired broken pulpit door
- Carpets cleaned in both buildings
- Cut holes in sanctuary floor to pull sound system wires
- Repaired front door of church
- Church field mowed by the Crofts
- Repaired church road signs and the church trailer sign
- Annual fire inspection and fire system pull station repaired
- Furnaces for all buildings (including manse) were serviced. Repairmen called when furnace shut down (spider in condenser line).
- Miscellaneous snow removals
- Mowed and trimmed the woods pathway, printed new readings, covered with Plexiglas
- Installed shelving in maintenance storage closet
- New carpet installed at basement door
- Cleared brush from driveway and cemetery graves, trimmed shrubbery, painted driveway posts

MANSE

- Handled name changes to rental lease (name change only)
- Replaced shingles and pipe flashing
- Cut tree branches

Properties Committee continue

CHRISTIAN EDUCATION BUILDING

- Cleaned out pastor's office, removed furniture, installed new desk
- Painted poles on porch
- Repaired porch floor for leaks
- Repaired exterior doors
- Repaired water fountain
- Replaced refrigerator evaporator fan
- Cleaned and painted kitchen storage room
- Removed hot water tank, connected to new tank, installed shut-off valves
- Painted stalls, window frames and heat ducts in restrooms
- Made repairs to men's restroom
- Replaced door latch on stock room
- Installed/replaced air conditioner in pastor's office
- Hauled old air conditioner to dump
- Cleaned windows
- Set-up for Coffey's senior project, Gottrow's wedding rehearsal dinner, and one-room schoolhouse reunion

CRANBERRY NURSERY SCHOOL

- Cleaned and sprayed playground periodically for weeds
- Spread woodchips on playground
- Removed small slide from playground, painted and made repairs to equipment
- Cut classroom door in half
- Repaired file cabinet in CNS office and added locks to office file cabinets
- Installed two bulletin boards
- Helped CNS with graduation set-up

STEWARDSHIP REPORT

As of December 31, 2012, a total of 25 pledges have been received. Allocations are as follows:

Current Expenses: \$ 80,904.00

Deacons: 1,480.00

Building Fund: 6,598.00

Missions: 6,474.00

Total pledged: \$ 95,456.00

Respectfully Submitted,



Susan Reed
Stewardship Committee

Worship Committee 2012 Annual Report

Members: Ron Carter, Allen Frederick, Betty Lehman, Rev. Kimberly Merrill, Steve Solman, Melanie Sturrock

Listed below are the highlights of the 2012 Worship Committee. Please feel free to contact any member of the committee with any ideas, questions, or feedback. Also, please let Rev. Kimberly or Steve Solman know if you would like to be on the Worship Committee in 2013.

- Members of our congregation participated in our Worship experience, serving as greeters and Worship leaders, Lent and Advent readers, Communion servers, candle lighters, and ushers. Many children also helped us while serving as acolytes during the year.
- Wednesday evening meals during the Lenten season.
- Successfully navigated through the time period between when Pastor Ed retired and Pastor Kimberly was assigned as Interim Pastor.
- VBS Sunday – July 22nd – celebration of everything from the Vacation Bible School week.
- Pentecost celebration – May 27th – celebration of Pentecost, including cake and drinks after the service.
- Special music throughout the summer.
- Jointly-held worship services with Crestview Presbyterian Church (Rev. Bob Goossen and Rev. Kimberly Merrill).
- Revisions to the current worship service format. Minor changes to the order of the service.
- Jointly worked with the Property Committee to organize the front of the sanctuary (microphone cords re-routed below the floor, and equipment cleaned up around the organ).
- Decoration of the church for Advent and Christmas, and the un-decoration of the church on January 6th.
- Thank you to Allen Frederick for his work with the Adult choir, the organization of the Special Music, and the coordination of all of the music throughout the Worship services.
- Thank you to Meredith Cox for her work with the Children's choir and coordinating the singing with Allen.
- Thank you to Beverly Magill for her work in always having the sanctuary decorated and ready for each season of the church calendar.
- Thank you to Betty Lehman for her work in organizing and planning the acolyte schedule and activities.
- Thank you to Melanie Sturrock for her work with the Heifer Helpers and the mission/education of our congregation for this program.
- Thank you to Jackie Leisie and everyone else that assists with the Live BIG program for our children during the worship service.
- Thank you to everyone in the Plains Church family for going on the Worship adventure with us this year as we transitioned from Pastor Ed Heller to numerous guest pastors to Reverend Kimberly Merrill. Your flexibility and dedication throughout the process was greatly appreciated.
- Other highlights of the year:
 - All of the Guest Pastors - Rev. David Hupp, Rev. Tom Clyde, Rev. Alan Adams, Rev. Doug Turner, Rev. Kathy Horstman, Rev. Isaac Baldeo, Bob Glaspey
 - 2012 Communion - January 8 (Epiphany), February 26, April 5 (Maundy Thursday), April 8 (Easter), May 27 (Pentecost), July 1, September 9, October 7 (World Communion Sunday), December 2, December 24
 - 2012 Lenten Readers: February 26 (The Solmans), March 4 (Melanie Sturrock), March 11 (Jim and Betty Lehman), March 18 (The Carters), March 25 (Allen Frederick), April 1 (Diane Heller), April 5 (Session)
 - 2012 Advent Leaders: December 2 (Melanie/Allen/Dory), December 9 (The Lehmans), December 16 (The Leisies), December 23 (The Solmans), December 24 (The Carters)

We look forward to 2013 and all of the aspects of "Worship" at Plains Church.

Respectfully submitted,

Steve Solman

2012 PLAINS CHURCH FINANCIAL HIGHLIGHTS

- Income was \$9,400 higher than Expenses
- General Fund giving was \$8,300 more than Budget
- Expenses were below budget by over \$1,000 for the year
- The Cranberry Nursery School made a gift of \$500 to Plains Church in November.
- Session approved a sale of \$2,500 of our stock fund investments. This sale occurred in October, with the proceeds transferred to the checking account and designated for Pastor Nominating Committee costs.
- Investment returns for Plains' three investment portfolios were as follows:
 - Leopold Trust +4.5%
 - Witzel Trust +8.0%
 - Unrestricted Investments +10.4%
- The budget for 2013 calls for Plains Church to have a balanced budget of income and expenses.

PLAINS PRESBYTERIAN CHURCH

TREASURER'S REPORT

CASH

	BEGINNING BALANCE	DEPOSITS	WITHDRAWALS	ENDING BALANCE
AVAILABLE CASH				
PRIMARY CHECKING - WEST VIEW	(2,695.32)	244,342.12	(232,254.88)	9,391.92
TOTAL AVAILABLE CASH	(2,695.32)	244,342.12	(232,254.88)	9,391.92
DESIGNATED CASH IN CHECKING ACCOUNT				
MISSION ESCROW-UNIFIED PRESBYT	0.00	7,037.36	(7,037.36)	0.00
MISSION ESCROW-HEIFER FUND	0.00	1,441.81	(1,441.81)	0.00
MISSION ESCROW-OGHSHARING	0.00	869.22	(869.22)	0.00
MISSION ESCROW-DISASTER RELIEF	0.00	754.92	(754.92)	0.00
MISSION ESCROW-GRACE HOSPITAL	0.00	1,225.00	(1,225.00)	0.00
MISSION ESCROW-CAMPING ASSOC	0.00	160.00	(160.00)	0.00
MISSION ESCROW-LOCAL MISSION	0.00	2,208.64	(2,208.64)	0.00
MISSION ESCROW-DEACON'S FUND	0.00	2,677.00	(2,677.00)	0.00
MISSION ESCROW-BLANKET FUND	0.00	570.00	(570.00)	0.00
MISSION ESCROW-THANK OFFERING	0.00	1,312.00	(1,312.00)	0.00
MISSION ESCROW-SOUPER BOWL	0.00	532.00	(532.00)	0.00
DESIGNATED - MUSIC FUND	1,410.19	0.00	(248.64)	1,161.55
DESIGNATED - FLOWER FUND	584.65	583.00	(550.18)	617.47
DESIGNATED - FUNERAL FUND	200.00	0.00	0.00	200.00
DESIGNATED - WOMEN'S CIRCLE	44.18	0.00	0.00	44.18
DESIGNATED - WOMEN'S RETREAT	345.17	1,451.50	(300.00)	1,496.67
DESIGNATED - PANCAKE BKFST	2,227.10	409.00	0.00	2,636.10
DESIGNATED - STRAWBERRY FESTIV	0.00	358.00	(123.57)	234.43
DESIGNATED - HARVEST HOME DIN	0.00	270.00	0.00	270.00
DESIGNATED - VBSCHOOL SUPPLIES	1,403.00	1,305.00	(578.06)	2,129.94
DESIGNATED - MEMORIAL FUND	5,928.96	100.00	(410.61)	5,618.35
DESIGNATED - CHRISTMAS JOY	486.13	7.95	(486.13)	7.95
DESIGNATED - CHRISTIAN ED.	748.07	925.00	(83.84)	1,589.23
DESIGNATED - WORSHIP COMMITTEE	325.97	0.00	(50.00)	275.97
DESIGNATED - BUILDING FUND	23,436.63	34,206.70	(28,488.04)	29,155.29
DESIGNATED - PASTOR NOMINATING	0.00	2,500.00	0.00	2,500.00
DESIGNATED - PASTOR EDUCATION	4,000.00	0.00	(995.00)	3,005.00
DESIGNATED - YOUTH FELLOWSHIP	915.05	1,672.00	(1,123.93)	1,463.12
DESIGNATED - TWEENYOUTH FLWSHP	30.00	0.00	0.00	30.00
DESIGNATED - INREACH/OUTREACH	1,579.73	351.52	(1,265.68)	665.57
TOTAL CHECKING DESIGNATED CASH	43,664.83	62,927.62	(53,491.63)	53,100.82
TOTAL CASH	40,969.51	307,269.74	(285,746.51)	62,492.74

RECEIPTS

LOCAL CHURCH RECEIPTS

OFFERING RECEIPTS

	ACTUAL	BUDGET	OVER/(UNDER) BUDGET
OFFERING - GEN'L FUND ENVELOPE	99,343.55	91,000.00	8,343.55
OFFERING - LOOSE PLATE	714.00	700.00	14.00
OFFERING - SUNDAY SCHOOL	560.00	450.00	110.00
OFFERING - INITIAL ENVELOPE	230.00	275.00	(45.00)
OFFERING - PER CAPITA	1,684.41	3,500.00	(1,815.59)
OFFERING - MISC.	365.00	0.00	365.00
TOTAL OFFERINGS	102,896.96	95,925.00	6,971.96

OTHER RECEIPTS

INTEREST - LEOPOLD TRUST	1,017.35	900.00	117.35
INTEREST - WITZEL FUND	597.76	800.00	(202.24)
INTEREST - CHECKING ACCOUNT	20.14	18.00	2.14
INTEREST - UNRESTRICTED INV.	434.46	600.00	(165.54)
RENT - FELLOWSHIP HALL MISC.	255.00	249.96	5.04

PLAINS PRESBYTERIAN CHURCH **TREASURER'S REPORT**

RENT - MANSE	13,485.00	12,300.00	1,185.00
CNS - COPIER LEASE	1,125.00	1,700.00	(575.00)
CNS - GIFT	500.00	0.00	500.00
CNS - CARPET CLEANING/SUPPLIES	591.02	0.00	591.02

TOTAL OTHER RECEIPTS	18,025.73	16,567.96	1,457.77
-----------------------------	------------------	------------------	-----------------

TOTAL CHURCH RECEIPTS	120,922.69	112,492.96	8,429.73
------------------------------	-------------------	-------------------	-----------------

MISSION RECEIPTS

MISSION ESCROW-UNIFIED PRESBYT	7,037.36	7,000.00	37.36
MISSION ESCROW-HEIFER FUND	1,395.04	0.00	1,395.04
MISSION ESCROW-OGHSHARING	869.22	0.00	869.22
MISSION ESCROW-DISASTER RELIEF	50.00	0.00	50.00
MISSION ESCROW-GRACE HOSPITAL	1,225.00	0.00	1,225.00
MISSION ESCROW-CAMPING ASSOC	160.00	0.00	160.00

TOTAL MISSION RECEIPTS	10,736.62	7,000.00	3,736.62
-------------------------------	------------------	-----------------	-----------------

DESIGNATED RECEIPTS

MISSION ESCROW-LOCAL MISSION	2,208.64	0.00	2,208.64
MISSION ESCROW-DEACON'S FUND	2,677.00	0.00	2,677.00
MISSION ESCROW-BLANKET FUND	570.00	0.00	570.00
MISSION ESCROW-THANK OFFERING	656.00	0.00	656.00
MISSION ESCROW-SOUPER BOWL	555.08	0.00	555.08
DESIGNATED - FLOWER FUND	583.00	0.00	583.00
DESIGNATED - WOMEN'S RETREAT	1,451.50	0.00	1,451.50
DESIGNATED-PANCAKE BFASST PRPTY	409.00	0.00	409.00
DESIGNATED - STRAWBERRY FESTIV	358.00	0.00	358.00
DESIGNATED - HARVEST HOME DIN	270.00	0.00	270.00
DESIGNATED - YOUTH FELLOWSHIP	1,672.00	0.00	1,672.00
DESIGNATED - VBSCHOOL REG.	1,305.00	0.00	1,305.00
DESIGNATED - INREACH/OUTREACH	351.52	0.00	351.52
DESIGNATED-MEMORIAL FUND	100.00	0.00	100.00
DESIGNATED-CHRISTMAS JOY OFFER	7.95	0.00	7.95
DESIGNATED - CHRISTIAN ED.	925.00	0.00	925.00
DESIGNATED-EVANS CITY FOOD BNK	441.50	0.00	441.50
DESIGNATED - BUILDING FUND	34,141.70	0.00	34,141.70
DESIGNATED - PASTOR NOMINATING	2,500.00	0.00	2,500.00
SAVINGS - LEOPOLD CD PRINCIPAL	5,000.00	0.00	5,000.00

TOTAL DESIGNATED RECEIPTS	56,182.89	0.00	56,182.89
----------------------------------	------------------	-------------	------------------

TOTAL RECEIPTS	187,842.20	119,492.96	68,349.24
-----------------------	-------------------	-------------------	------------------

EXPENSES

	AMOUNT DISPURSED	ANNUAL BUDGET	UNDER/(OVER) BUDGET
LOCAL CHURCH EXPENSES			
CHURCH - CHRISTIAN EDUCATION	720.31	400.00	(320.31)
CHURCH - STEWARDSHIP & FINANCE	143.63	150.00	6.37
CHURCH - SESSION	0.00	100.00	100.00
CHURCH - WORSHIP & MUSIC	363.79	300.00	(63.79)
CHURCH - INREACH/OUTREACH	100.45	60.00	(40.45)
CHURCH MUSIC DIRECTOR FICA ER	669.60	680.00	10.40
CHURCH MUSIC DIRECTOR MEDCR ER	156.72	160.00	3.28
CHURCH - SECRETARY 2 SALARY	4,999.50	0.00	(4,999.50)
CHURCH - SECRETARY SALARY	2,356.75	7,200.00	4,843.25
CHURCH - SECRETARY FICA ER	146.10	500.00	353.90
CHURCH - SECRETARY MEDICARE ER	34.19	100.00	65.81
CHURCH-SECRETARY2 FICA ER	309.97	0.00	(309.97)
CHURCH-SECRETARY2 MEDICARE ER	72.50	0.00	(72.50)
CHURCH - SUPPLY MINISTERS	2,400.00	0.00	(2,400.00)
CHURCH - TEMP ORGANIST	0.00	100.00	100.00
CHURCH-MUSIC DIRECTOR SALARY	10,800.00	10,800.00	0.00

PLAINS PRESBYTERIAN CHURCH **TREASURER'S REPORT**

CHURCH - MISC.	64.00	0.00	(64.00)
TOTAL LOCAL CHURCH EXPENSES	23,337.51	20,550.00	(2,787.51)
OFFICE EXPENSES			
OFFICE - INTERNET SERVICE	1,710.50	1,550.00	(160.50)
OFFICE - SUPPLIES	1,116.26	550.00	(566.26)
OFFICE - POSTAGE	144.00	275.00	131.00
OFFICE - COPIER LEASE	3,381.15	3,300.00	(81.15)
OFFICE - SAFE DEPOSIT BOX RENT	32.00	32.00	0.00
ADVERTISING EXPENSE	156.00	156.00	0.00
TOTAL OFFICE EXPENSE	6,539.91	5,863.00	(676.91)
PROPERTY EXPENSES			
PROPERTY - CLEANING SUPPLIES	556.59	399.96	(156.63)
PROPERTY - GROUNDS CARE	3,236.18	3,300.00	63.82
PROPERTY - KITCHEN SUPPLIES	92.92	0.00	(92.92)
PROPERTY - CUSTODIAN SALARY	3,720.00	3,720.00	0.00
PROPERTY - CUSTODIAN FICA-ER	230.64	230.00	(0.64)
PROPERTY-CUSTODIAN MEDICARE-ER	54.00	55.00	1.00
PROPERTY - MAINT. & REPAIRS	2,720.58	600.00	(2,120.58)
PROPERTY - INSURANCE	6,217.00	5,500.00	(717.00)
PROPERTY - WORKMAN COMP. INSUR	114.00	0.00	(114.00)
PROPERTY - ELECTRIC	2,311.95	3,300.00	988.05
PROPERTY - WATER	146.53	200.00	53.47
PROPERTY-GAS	3,161.61	3,800.00	638.39
PROPERTY - TRASH & PROPANE	588.26	600.00	11.74
PROPERTY - FIRE ALARM MONITOR	353.09	200.00	(153.09)
TOTAL PROPERTY EXPENSE	23,503.35	21,904.96	(1,598.39)
MANSE EXPENSES			
MANSE - GAS	0.00	300.00	300.00
MANSE - SEWER	100.72	250.00	149.28
MANSE - MAINTENANCE	200.00	200.00	0.00
MANSE - PROPERTY TAXES	3,161.30	3,000.00	(161.30)
MANSE - RENOVATION	150.00	0.00	(150.00)
TOTAL MANSE EXPENSE	3,612.02	3,750.00	137.98
OTHER EXPENSES			
OTHER - MISC.	595.00	0.00	(595.00)
PER CAPITA EXPENSES	3,460.00	3,500.00	40.00
TOTAL OTHER EXPENSE	4,055.00	3,500.00	(555.00)
PASTORAL EXPENSES			
PASTOR - SALARY	15,937.50	33,800.00	17,862.50
PASTOR - FICA EMPLOYER	889.32	2,000.00	1,110.68
PASTER - MEDICARE EMPLOYER	207.99	475.00	267.01
PASTOR - TRAVEL EXP. REIMBURSE	3,653.19	6,500.00	2,846.81
PASTOR-EYE & DENTAL	0.00	600.00	600.00
PASTOR - UTILITY ALLOWANCE	74.10	600.00	525.90
PASTOR-MEDICAL COPAY/DEDUCTIBL	2,032.67	2,000.00	(32.67)
PASTOR-PROFESSIONAL EXP. REIMB	324.00	1,200.00	876.00
PASTOR-PENSION & MAJOR MEDICAL	7,185.46	9,800.00	2,614.54
INTERIM PASTOR SALARY	13,333.30	0.00	(13,333.30)
INTERIM PASTOR FICA EMPLOYER	826.70	0.00	(826.70)
INTERIM PASTOR MED EMPLOYER	193.30	0.00	(193.30)
INTERIM PASTOR - TRAVEL EXPNS.	123.04	0.00	(123.04)
INTERIM PASTOR PENS & MAJ MED	3,297.39	0.00	(3,297.39)
INTERIM PASTOR EDUCATION EXP	1,142.36	0.00	(1,142.36)
INTERIM PASTOR MED REIMBURSE	922.00	0.00	(922.00)
INTERIM PASTOR - PROF. EXPENS.	234.75	0.00	(234.75)
INTERIM PASTOR - MISC.	75.33	0.00	(75.33)
TOTAL PASTORAL EXPENSE	50,452.40	56,975.00	6,522.60
TOTAL NON-DESIGNATED EXPENSES	111,500.19	112,542.96	1,042.77

**PLAINS PRESBYTERIAN CHURCH
TREASURER'S REPORT**

DESIGNATED EXPENSES

MISSION ESCROW-UNIFIED PRESBYT	7,037.36	0.00	(7,037.36)
MISSION ESCROW-HEIFER FUND	1,441.81	0.00	(1,441.81)
MISSION ESCROW-OGHSHARING	869.22	0.00	(869.22)
MISSION ESCROW-DISASTER RELIEF	754.92	0.00	(754.92)
MISSION ESCROW-GRACE HOSPITAL	1,225.00	0.00	(1,225.00)
MISSION ESCROW-CAMPING ASSOC	160.00	0.00	(160.00)
MISSION ESCROW-LOCAL MISSION	1,603.90	0.00	(1,603.90)
MISSION ESCROW-DEACON'S FUND	2,677.00	0.00	(2,677.00)
MISSION ESCROW-BLANKET FUND	570.00	0.00	(570.00)
MISSION ESCROW-THANK OFFERING	656.00	0.00	(656.00)
MISSION ESCROW-SOUPER BOWL	532.00	0.00	(532.00)
DESIGNATED - MUSIC FUND	248.64	0.00	(248.64)
DESIGNATED - FLOWER FUND	550.18	0.00	(550.18)
DESIGNATED - WOMEN'S RETREAT	300.00	0.00	(300.00)
DESIGNATED - STRAWBERRY FESTIV	123.57	0.00	(123.57)
DESIGNATED - VBSCHOOL REG.	578.06	0.00	(578.06)
DESIGNATED - INREACH/OUTREACH	1,053.73	0.00	(1,053.73)
DESIGNATED - MEMORIAL FUND	410.61	0.00	(410.61)
DESIGNATED-CHRISTMAS JOY OFFER	486.13	0.00	(486.13)
DESIGNATED - CHRISTIAN ED.	83.84	0.00	(83.84)
DESIGNATED - YOUTH FELLOWSHIP	1,123.93	0.00	(1,123.93)
DESIGNATED - WORSHIP COMMITTEE	50.00	0.00	(50.00)
DESIGNATED - LEOPOLD TRUST INV	5,000.00	0.00	(5,000.00)
DESIGNATED - BUILDING FUND	28,488.04	0.00	(28,488.04)

TOTAL DESIGNATED EXPENSES**56,023.94****0.00****(56,023.94)****TOTAL EXPENSES****167,524.13****112,542.96****(54,981.17)****INVESTMENTS****BALANCE****UNRESTRICTED INVESTMENTS**

NEW COVENANT (UNRESTRICTED)

29,551.87

TOTAL UNRESTRICTED INVESTMENTS**29,551.87****TRUST FUND INVESTMENTS**

NEWCOV TRUST WITZEL 57-0116-02

64,699.48

NEW COV FND LEOPOLD 1110400042

37,091.20

TOTAL TRUST FUND INVESTMENTS**101,790.68****TOTAL INVESTMENTS****131,342.55****RESPECTFULLY SUBMITTED,****FRANK J. ALOI, TREASURER**

Contribution Entry

Summary Totals by Posting Date

Posting Dates: 1/1/2012 to 12/31/2012

Plains Presbyterian Church

326 Plains Church Rd.
Cranberry Twp., PA 16066
(724)538-8785

1/5/2013

Code	Description	Amount	Reference
1	Current Expenses	\$99,775.55	
2	Youth Fellowship	\$1,672.00	
4	Evans City Food Bank	\$441.50	
6	New Cov Fd (Witzel)	\$597.76	
10	Pancake Breakfast	\$409.00	
12	Christmas Joy	\$7.95	
50	Mission Expenses	\$6,496.00	
60	Unified Mission	\$2,750.00	
67	Presb Disaster Relf	\$50.00	
70	Brazil GraceHospital	\$1,225.00	
80	OGHS	\$869.22	
85	Checking Account Int	\$20.14	
90	Maundy Thursday	\$282.00	
96	VBS Donations	\$1,305.00	
100	Per Capita	\$1,684.41	
150	Initial Offering	\$230.00	
160	Inreach/Outreach	\$338.52	
185	Coffee Hr Collection	\$13.00	
200	Deacons	\$2,677.00	
250	Christian Ed	\$925.00	
275	Women's Retreat	\$1,451.50	
300	Building Fund	\$34,141.70	
350	Strawberry Festival	\$358.00	
351	Harvest Home Dinner	\$270.00	
355	Church & FH Rental	\$255.00	
400	Memorial Fund	\$100.00	
450	Flower Fund	\$583.00	
500	Sunday School	\$560.00	
550	Heifer Project	\$1,395.04	
560	Blanket Fund	\$570.00	
565	Thank Offering	\$656.00	
600	Souper Bowl	\$555.08	
700	Campers Fund	\$160.00	
974	Unrestricted Invest	\$2,500.00	
975	Unrest Inv Income	\$434.46	

Contribution Entry Totals - Summary Totals by Posting Date

Code	Description	Amount	Reference
988	Misc Income	\$365.00	
990	Leopold Trust	\$5,000.00	
991	Leopold Trust Int.	\$1,017.35	
993	CNS Gift	\$500.00	
995	Copier Lease-CNS	\$1,125.00	
996	Carpt clean/supplies	\$591.02	
999	Manse Rent	\$13,485.00	
	Grand Total:	\$187,842.20	

Plains Presbyterian Church Operating Budget

2012 Actual vs Budget and 2013 Budget

	2012 Budget	2012 Actual	Over/Under	2013 Budget	Budget Diff
INCOME					
CHURCH INCOME					
Offering - Gen'l Fund Envelope	91,000.00	99,343.55	8,343.55	93,800.00	2,800.00
Offering - Loose Plate	700.00	714.00	14.00	750.00	50.00
Offering - Sunday School	450.00	560.00	110.00	560.00	110.00
Offering - Initial Envelope	275.00	230.00	(45.00)	230.00	(45.00)
Offering - Per Capita	3,500.00	1,684.41	(1,815.59)	2,483.00	(1,017.00)
Offering - Misc.	0.00	365.00	365.00	0.00	0.00
Interest - Leopold Trust	900.00	1,017.35	117.35	1,000.00	100.00
Interest - Witzel Fund	800.00	597.76	(202.24)	600.00	(200.00)
Interest - Checking Account	18.00	20.14	2.14	20.00	2.00
Interest - Unrestricted Fund	600.00	434.46	(165.54)	440.00	(160.00)
Rent - Fellowship Hall Misc.	250.00	255.00	5.00	200.00	(50.00)
Rent - Manse	12,300.00	13,485.00	1,185.00	12,300.00	0.00
CNS - Copier Lease	1,700.00	1,125.00	(575.00)	1,500.00	(200.00)
CNS - Gift	0.00	500.00	500.00	0.00	0.00
CNS - Carpet Cleaning/Supplies	0.00	591.02	591.02	400.00	400.00
Total Church Income	112,493.00	120,922.69	8,429.69	114,283.00	1,790.00
EXPENSES					
CHURCH EXPENSES					
Church - Christian Education	400.00	793.01	393.01	650.00	250.00
Church -Stewardship & Finance	150.00	143.63	(6.37)	150.00	0.00
Church - Session	100.00	0.00	(100.00)	100.00	0.00
Church - Worship	300.00	363.79	63.79	600.00	300.00
Church - Inreach/Outreach	60.00	100.45	40.45	150.00	90.00
Church - Choir Director FICA ER	680.00	669.60	(10.40)	680.00	0.00
Church-Choir Director Medic ER	160.00	156.72	(3.28)	160.00	0.00
Church - Secretary Salary	7,200.00	4,999.50	(2,200.50)	0.00	(7,200.00)
Church - Secretary 2 Salary*	0.00	2,356.75	2,356.75	7,100.00	7,100.00
Church - Secretary FICA ER	500.00	146.10	(353.90)	0.00	(500.00)
Church - Secretary Medicare ER	100.00	34.19	(65.81)	0.00	(100.00)
Church - Secretary 2 FICA ER	0.00	309.97	309.97	447.00	447.00
Church - Secretary 2 Medicare ER	0.00	72.50	72.50	104.00	104.00
Church - Supply Ministers	0.00	2,400.00	2,400.00	600.00	600.00
Church - Temp Organist	100.00	0.00	(100.00)	100.00	0.00
Church - Choir Director Salary	10,800.00	10,800.00	0.00	11,050.00	250.00
Church - Misc	0.00	64.00	64.00	0.00	0.00
Total Church Expenses	20,550.00	23,410.21	2,860.21	21,891.00	1,341.00

Plains Presbyterian Church Operating Budget

2012 Actual vs Budget and 2013 Budget

	2012 Budget	2012 Actual	Over/Under	2013 Budget	Budget Diff
OFFICE EXPENSES					
Office - Internet Service	1,550.00	1,710.50	160.50	1,750.00	200.00
Office - Supplies	550.00	1,116.26	566.26	1,000.00	450.00
Office - Postage	275.00	144.00	(131.00)	150.00	(125.00)
Office - Copier Lease	3,300.00	3,381.15	81.15	3,400.00	100.00
Office - Safe Deposit Box Rent	32.00	32.00	0.00	32.00	0.00
Advertising expense	156.00	156.00	0.00	156.00	0.00
Total Office Expenses	5,863.00	6,539.91	676.91	6,488.00	625.00
PROPERTY EXPENSES					
Property - Cleaning Supplies	400.00	556.59	156.59	550.00	150.00
Property - Grounds Care	3,300.00	3,236.18	(63.82)	3,600.00	300.00
Property - Kitchen Supplies	0.00	92.92	92.92	100.00	100.00
Property - Custodian Salary	3,720.00	3,720.00	0.00	4,320.00	600.00
Property - Custodian FICA-ER	230.00	230.64	0.64	268.00	38.00
Property-Custodian Medicare-ER	55.00	54.00	(1.00)	63.00	8.00
Property - Maint. & Repairs	600.00	2,720.58	2,120.58	2,500.00	1,900.00
Property - Insurance	5,500.00	6,217.00	717.00	6,000.00	500.00
Property - Workman Comp Insur	0.00	114.00	114.00	115.00	115.00
Property - Electric	3,300.00	2,311.95	(988.05)	2,300.00	(1,000.00)
Property - Water	200.00	146.53	(53.47)	150.00	(50.00)
Property - Gas	3,800.00	3,161.61	(638.39)	3,200.00	(600.00)
Property - Trash & Propane	600.00	588.26	(11.74)	600.00	0.00
Property - Fire Alarm Monitor	200.00	353.09	153.09	355.00	155.00
Total Property Expenses	21,905.00	23,503.35	1,598.35	24,121.00	2,216.00
MANSE EXPENSES					
Manse - Gas	300.00	0.00	(300.00)	50.00	(250.00)
Manse - Sewer	250.00	100.72	(149.28)	100.00	(150.00)
Manse - Maintenance	200.00	200.00	0.00	250.00	50.00
Manse - Property Taxes	3,000.00	3,161.30	161.30	3,200.00	200.00
Manse - Renovation	0.00	150.00	150.00	0.00	0.00
Total Manse Expenses	3,750.00	3,612.02	(137.98)	3,600.00	(150.00)
OTHER EXPENSES					
Other - Misc	0.00	522.30	522.30	225.00	225.00
Per Capita Expenses	3,500.00	3,460.00	(40.00)	2,483.00	(1,017.00)
Total Other Expenses	3,500.00	3,982.30	482.30	2,708.00	(792.00)

Plains Presbyterian Church Operating Budget

2012 Actual vs Budget and 2013 Budget

	2012 Budget	2012 Actual	Over/Under	2013 Budget	Budget Diff
PASTOR EXPENSES					
Pastor - Salary	33,800.00	15,937.50	(17,862.50)	0.00	(33,800.00)
Pastor - FICA Employer	2,000.00	889.32	(1,110.68)	0.00	(2,000.00)
Pastor - Medicare Employer	475.00	207.99	(267.01)	0.00	(475.00)
Pastor - Travel Exp. Reimburse	6,500.00	3,653.19	(2,846.81)	0.00	(6,500.00)
Minister-Eye & Dental	600.00	0.00	(600.00)	0.00	(600.00)
Pastor - Utility Allowance	600.00	74.10	(525.90)	0.00	(600.00)
Pastor-Medical Copay/Deductibl	2,000.00	2,032.67	32.67	0.00	(2,000.00)
Pastor-Professional Exp. Reimb	1,200.00	324.00	(876.00)	0.00	(1,200.00)
Pastor-Pension & Major Medical	9,800.00	7,185.46	(2,614.54)	0.00	(9,800.00)
Interim Pastor - Salary	0.00	13,333.30	13,333.30	33,000.00	33,000.00
Interim Pastor - FICA Employer	0.00	826.70	826.70	2,050.00	2,050.00
Interim Pastor - Medicare Employer	0.00	193.30	193.30	475.00	475.00
Interim Pastor - Travel Expenses	0.00	123.04	123.04	500.00	500.00
Interim Pastor-Pension & Major Medical	0.00	3,297.39	3,297.39	13,000.00	13,000.00
Interim Pastor - Education	0.00	1,142.36	1,142.36	2,700.00	2,700.00
Interim Pastor-Medical	0.00	922.00	922.00	1,750.00	1,750.00
Interim Pastor-Professional Exp. Reimb	0.00	234.75	234.75	2,000.00	2,000.00
Interim Pastor- Misc	0.00	75.33	75.33	0.00	0.00
Total Pastor Expenses	56,975.00	50,452.40	(6,522.60)	55,475.00	(1,500.00)
TOTAL CHURCH INCOME	112,493.00	120,922.69	8,429.69	114,283.00	1,790.00
TOTAL CHURCH EXPENSES	112,543.00	111,500.19	(1,042.81)	114,283.00	1,740.00
NET INCOME	(50.00)	9,422.50	9,472.50	0.00	50.00

Cranberry Nursery School Annual Report 2012

Prepared by Julie Young, 1/7/13

CNS is an extension and outreach of Plains Presbyterian Church and a ministry of the Christian Education Committee.

There are currently 44 students enrolled in the school. This is an increase of 12 students compared to last year.

There are 5 employees of the school as defined below:

Jonee Mascellino is the returning Nursery teacher

Amy Zugell is the returning Pre-K teacher

Melissa Holcomb is the Nursery aide

Lisa Bender is new this year as the Pre-K aide

Angela Kushner is the director of the school (new role for Angela this year)

There are 4 class sessions:

Nursery T/Th mornings

Nursery MWF mornings

Pre-K MWF mornings

Pre-K M-Th afternoons (new 4 day program this year)

The school is governed by a school board consisting of 7 church members: Tiffany Aloï, Denise Kremmel, Jackie Leisie, Amy Roscoe, Benji Showers, Maggie Simpson, and Julie Young. The non-voting members of the school board include three parent representatives: Karen Goul, Lisa Ridenour, and Kari Zimmer; and the CNS Director, Angela Kushner. Note that board member changes occur in alignment with the school year and not the calendar year.

Although CNS continues to operate on a tight budget, the improved enrollment numbers this year allowed a \$500 contribution to the church.

School events include orientation at the beginning of the school year, field trips, holiday celebrations, open house, library days, cooking, arts and crafts, science activities, and parent teacher conferences. The school is grateful for the support of the church. More information about the school may be found at the Plains Church website (www.plainschurch.com) by clicking on the Nursery School button.

Pastor's Report

2012 was a time of change for Plains Presbyterian Church. With Rev. Ed retiring and a summer of filling the pulpit with various people, Plains started her journey towards a new chapter in a wonderful volume filled with stories of the great cloud of witnesses. In June of 2012, the session found not one but two people to fill the role as interim, a wise, well-seasoned veteran and a wild card. Guess who they chose? Yes, I am that wild card that is still learning the ropes of what it means to be an interim pastor, and I thank you all (or should that be “y’all”) for your patience with me as we all learn and grow in this process of seeking God’s call for Plains’ next pastor.

2012 saw my first completion of week 1 of interim training at Pittsburgh Theological Seminary. Week 2 will be in March of this year. We also formed the incredible Mission Study Task Force. With the task force came the first congregational survey. The results of the survey and more will be used by the Pastor Nominating Committee as Plains starts her intentional search for her next called pastor.

As moderator of Plains Council (the Book Of Order’s new term), the Ruling Elders (another new term) and I (the Teaching Elder) have been working to become the people of God so that we can do the work that God gives us to do by taking more time to share Scripture and prayer together in addition to learning the new titles and more about the new Form of Government (NFOG) found in the Book of Order.

As a pastor, I found my way to NH Passavant to visit with people and to sit with people. This was poignantly the way that 2012 ended for me with the passing of Shirley Engel. It was a holy moment for me that I will never forget. 2012 also found me serving home communion with the elder of the month, Tim Roscoe, and this will be a new practice that I look forward to in 2013.

As a Teaching Elder, I take my role to teach and preach about God’s love for us as an incredible honor that God has given me. In addition to preparing items for worship and writing sermons, a Bible study called *God is Closer Than You Think* by John Ortberg was offered on Monday evenings. In 2013, there will be more Bible studies offered in addition to offering Dave Ramsay’s Financial Peace University.

Round all of this out with a couple of committee meetings and getting to know a few people and most importantly, precious time spent with the Lord, God Almighty, and I can firmly and confidently say that God is moving at Plains Presbyterian which sometimes can be painful but is always fruitful, especially if we remember to keep our eyes, ears and hearts focused on Him and His purposes for His church.

In His service,

Reverend Kimberly L. Merrill

John 15:16-17

“¹⁶You did not choose me, but I chose you and appointed you so that you might go and bear fruit—fruit that will last—and so that whatever you ask in my name the Father will give you. ¹⁷This is my command: Love each other.”

Mission Study Task Force Report for Annual Congregational Meeting –Part II

January 2013

The Mission Study Task Force was organized by the Session to obtain statistical and spiritual information from the congregation to be used for calling a pastor to Plains. Our members are Frank Aloj, Bev Magill, , Tim Roscoe, Maggie Simpson, Melanie Sturrock , Ron Carter as an Alternate and Rev. Kimberly Merrill.

The “W” pastoral search process depicted is the process in which our church will follow to call a pastor to Plains. This process was designed and strongly suggested by the Beaver Butler Presbytery to be used by their churches. Our Session approved and is embracing this search process.

The Mission Study Task Force is to involve the congregation in accomplishing the developmental tasks such as reflecting on history, discovering our new identity and committing to a new direction. The congregation’s reflections, visions and spiritual gifts will be gathered through several surveys.

The first survey was the church assessment survey. It was to discern what is important to the congregation and how impactful our church is in nurturing their Christian life. This survey was sent to 120 people including members, non-active members and non-members of Plains. We received 51 surveys. We are presenting the results at this congregational meeting and a copy of the presentation will be distributed at the meeting. To complete this survey, the Mission Task Group will be holding small group discussions with the congregation at this meeting. Conclusions will be drawn from the survey and those discussions.

The second survey will be the Spiritual Gifts survey. This survey will reveal the congregation’s spiritual gifts to them and identify the churches collective spiritual gifts to the pastoral candidate. God has given every Christian at least one spiritual gift. Discovering and exercising your God-given spiritual gifts allows you to experience maximum fulfillment with minimum frustration in your Christian life and ministry. In the coming weeks, a survey will be chosen by the Mission Task Force and be presented to the congregation. A special dinner will be held to celebrate your spiritual gifts and share those gifts with each other and the Task Force.

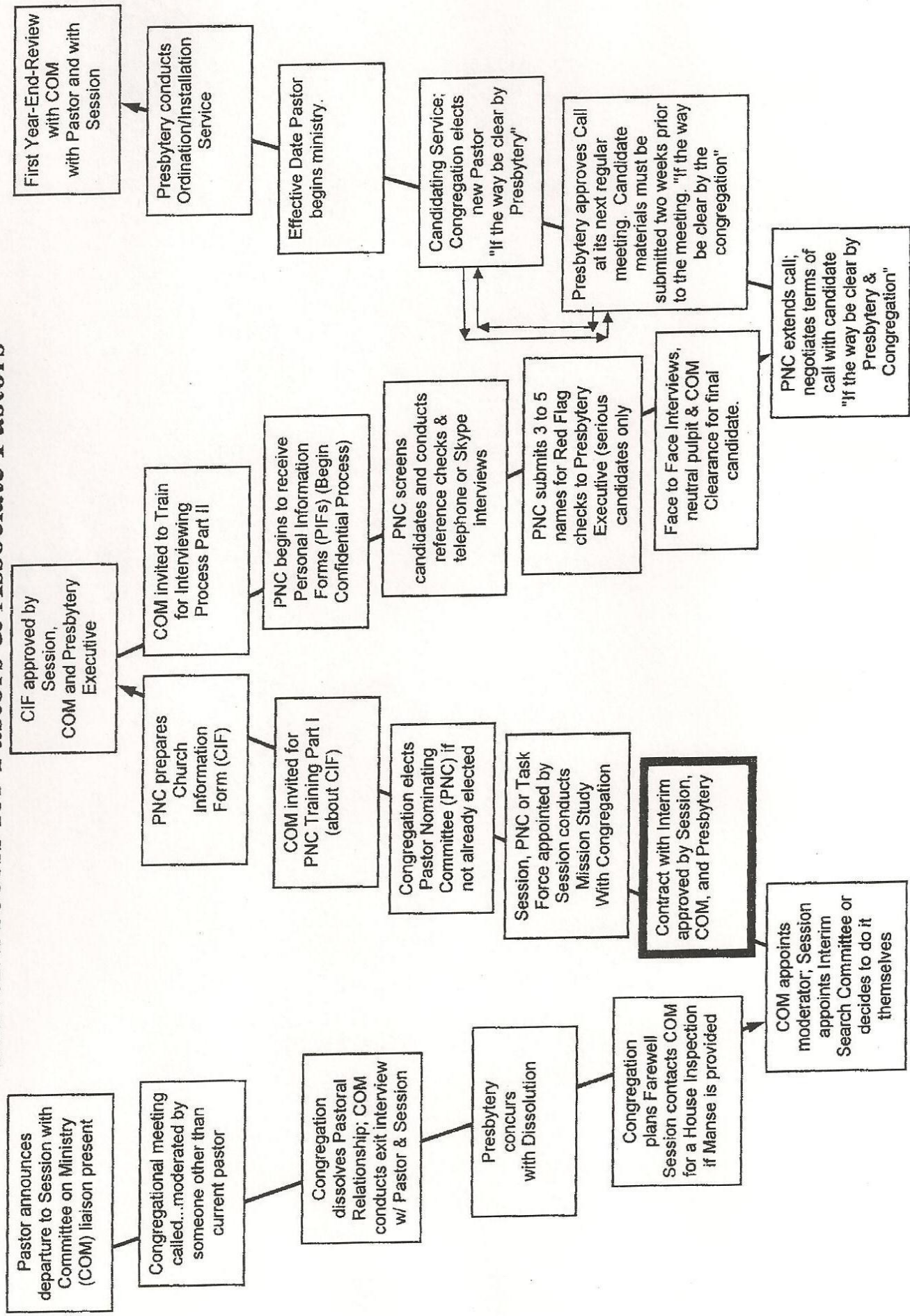
Once we have compiled the results of the surveys and researched the MissionInsite, a census of Cranberry, the Task Force will submit a report to the Pulpit Nominating Committee. Then Step 8- Mission Task Force- in the search process will be completed and the Mission Task Force will be dissolved.

Respectfully submitted,

Melanie Sturrock

Beaver-Butler Presbytery

Search Process for Pastors & Associate Pastors



Check each box as tasks are completed.
 This diagram might be used on a bulletin board to keep your congregation informed on the Search Process.
 Some steps may not be applicable in certain situations. Please consult your COM liaison.

PLAINS PRESBYTERIAN CHURCH ASSESSMENT SURVEY 2012

(select your answer by placing an X in the appropriate box)

1. Please rate the importance of the following areas of Plains Church life

	HIGH	AVERAGE	LOW	NOT AT ALL	N/A, BUT WOULD LIKE TO HAVE
CNS	<input type="checkbox"/>	<input type="checkbox"/>	<input type="checkbox"/>	<input type="checkbox"/>	<input type="checkbox"/>
Adult Choir	<input type="checkbox"/>	<input type="checkbox"/>	<input type="checkbox"/>	<input type="checkbox"/>	<input type="checkbox"/>
Deacons	<input type="checkbox"/>	<input type="checkbox"/>	<input type="checkbox"/>	<input type="checkbox"/>	<input type="checkbox"/>
Bible Study	<input type="checkbox"/>	<input type="checkbox"/>	<input type="checkbox"/>	<input type="checkbox"/>	<input type="checkbox"/>
Womens Group	<input type="checkbox"/>	<input type="checkbox"/>	<input type="checkbox"/>	<input type="checkbox"/>	<input type="checkbox"/>
Youth Choir	<input type="checkbox"/>	<input type="checkbox"/>	<input type="checkbox"/>	<input type="checkbox"/>	<input type="checkbox"/>
Nursery	<input type="checkbox"/>	<input type="checkbox"/>	<input type="checkbox"/>	<input type="checkbox"/>	<input type="checkbox"/>
Prayer Chain	<input type="checkbox"/>	<input type="checkbox"/>	<input type="checkbox"/>	<input type="checkbox"/>	<input type="checkbox"/>
Adult Education	<input type="checkbox"/>	<input type="checkbox"/>	<input type="checkbox"/>	<input type="checkbox"/>	<input type="checkbox"/>
VBS	<input type="checkbox"/>	<input type="checkbox"/>	<input type="checkbox"/>	<input type="checkbox"/>	<input type="checkbox"/>
Fellowship Events	<input type="checkbox"/>	<input type="checkbox"/>	<input type="checkbox"/>	<input type="checkbox"/>	<input type="checkbox"/>
Communicants' Class	<input type="checkbox"/>	<input type="checkbox"/>	<input type="checkbox"/>	<input type="checkbox"/>	<input type="checkbox"/>
Youth Programs	<input type="checkbox"/>	<input type="checkbox"/>	<input type="checkbox"/>	<input type="checkbox"/>	<input type="checkbox"/>
Visits to shut-ins	<input type="checkbox"/>	<input type="checkbox"/>	<input type="checkbox"/>	<input type="checkbox"/>	<input type="checkbox"/>
Small Groups	<input type="checkbox"/>	<input type="checkbox"/>	<input type="checkbox"/>	<input type="checkbox"/>	<input type="checkbox"/>
Community Outreach	<input type="checkbox"/>	<input type="checkbox"/>	<input type="checkbox"/>	<input type="checkbox"/>	<input type="checkbox"/>
Ministry	<input type="checkbox"/>	<input type="checkbox"/>	<input type="checkbox"/>	<input type="checkbox"/>	<input type="checkbox"/>
Stewardship	<input type="checkbox"/>	<input type="checkbox"/>	<input type="checkbox"/>	<input type="checkbox"/>	<input type="checkbox"/>
Men's Group	<input type="checkbox"/>	<input type="checkbox"/>	<input type="checkbox"/>	<input type="checkbox"/>	<input type="checkbox"/>
Lenten Services	<input type="checkbox"/>	<input type="checkbox"/>	<input type="checkbox"/>	<input type="checkbox"/>	<input type="checkbox"/>

2. Please describe the impact that each of these areas has on you and your Christian life.

	A LOT	SOME	LITTLE	NONE
Worship Service	<input type="checkbox"/>	<input type="checkbox"/>	<input type="checkbox"/>	<input type="checkbox"/>
The Sermon	<input type="checkbox"/>	<input type="checkbox"/>	<input type="checkbox"/>	<input type="checkbox"/>
Church member fellowship	<input type="checkbox"/>	<input type="checkbox"/>	<input type="checkbox"/>	<input type="checkbox"/>
Small Groups and prayer	<input type="checkbox"/>	<input type="checkbox"/>	<input type="checkbox"/>	<input type="checkbox"/>
Bible Study	<input type="checkbox"/>	<input type="checkbox"/>	<input type="checkbox"/>	<input type="checkbox"/>
How members care about you	<input type="checkbox"/>	<input type="checkbox"/>	<input type="checkbox"/>	<input type="checkbox"/>
How the pastor cares about you	<input type="checkbox"/>	<input type="checkbox"/>	<input type="checkbox"/>	<input type="checkbox"/>
CNS	<input type="checkbox"/>	<input type="checkbox"/>	<input type="checkbox"/>	<input type="checkbox"/>
The work of the Holy Spirit	<input type="checkbox"/>	<input type="checkbox"/>	<input type="checkbox"/>	<input type="checkbox"/>
Community Outreach	<input type="checkbox"/>	<input type="checkbox"/>	<input type="checkbox"/>	<input type="checkbox"/>

3. What is your impression of where new ideas come from at Plains Church (select all that apply)?

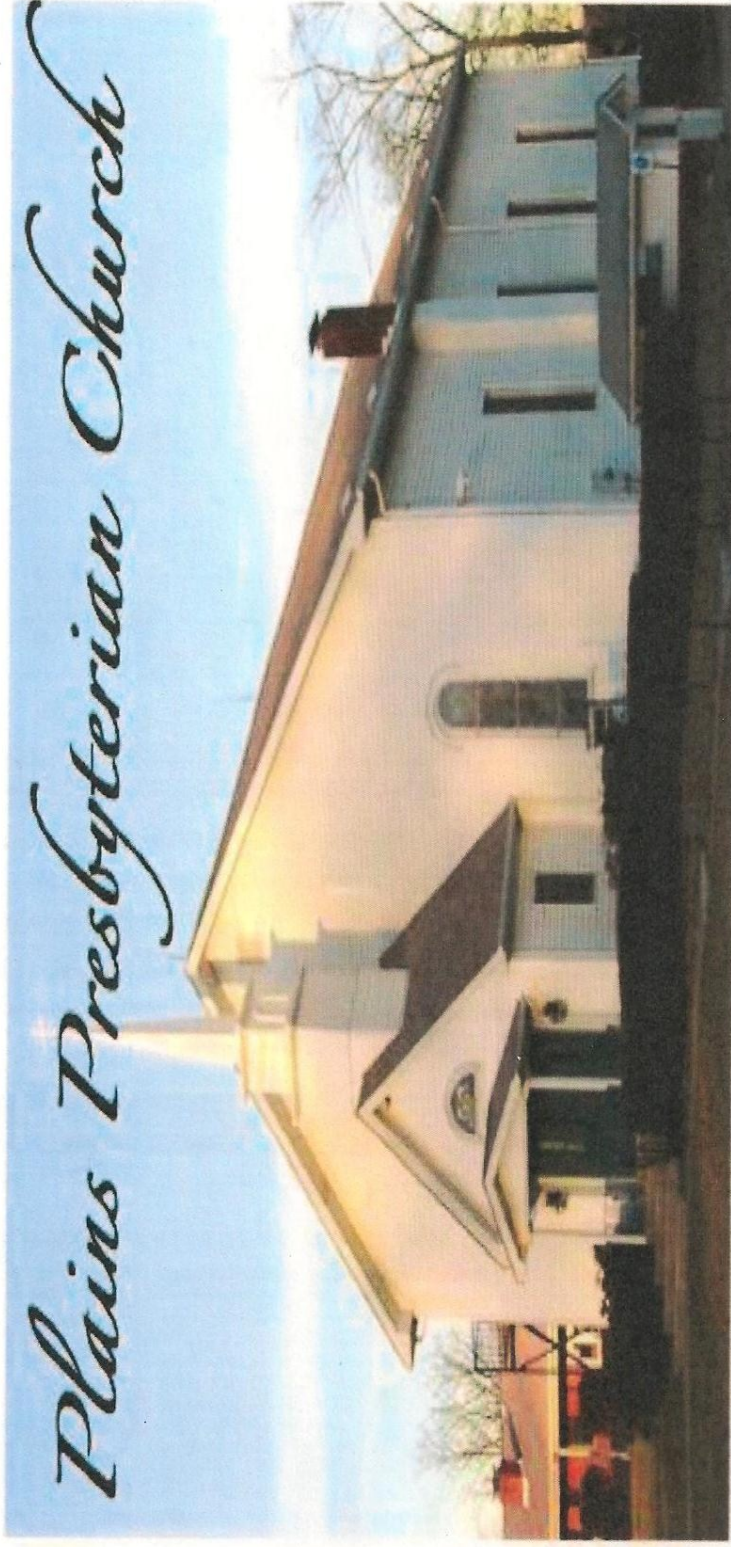
Community Outreach	<input type="checkbox"/>	Elders	<input type="checkbox"/>
Community Outreach	<input type="checkbox"/>	Non-Members	<input type="checkbox"/>
Community Outreach	<input type="checkbox"/>	Don't Know	<input type="checkbox"/>

4. Who do you perceive does the planning for the work of the congregation (please check all that apply)?

	Who Plans?
The Pastor plans and informs the Session	<input type="checkbox"/>
A few members plan	<input type="checkbox"/>
The Session does the planning	<input type="checkbox"/>
Session committees plan and get Session approval	<input type="checkbox"/>
Input and participation from Church members, then Session approves	<input type="checkbox"/>

Who should do this work?

Please provide any additional comments below, and if needed on the other side of this survey:



Plains Presbyterian Church

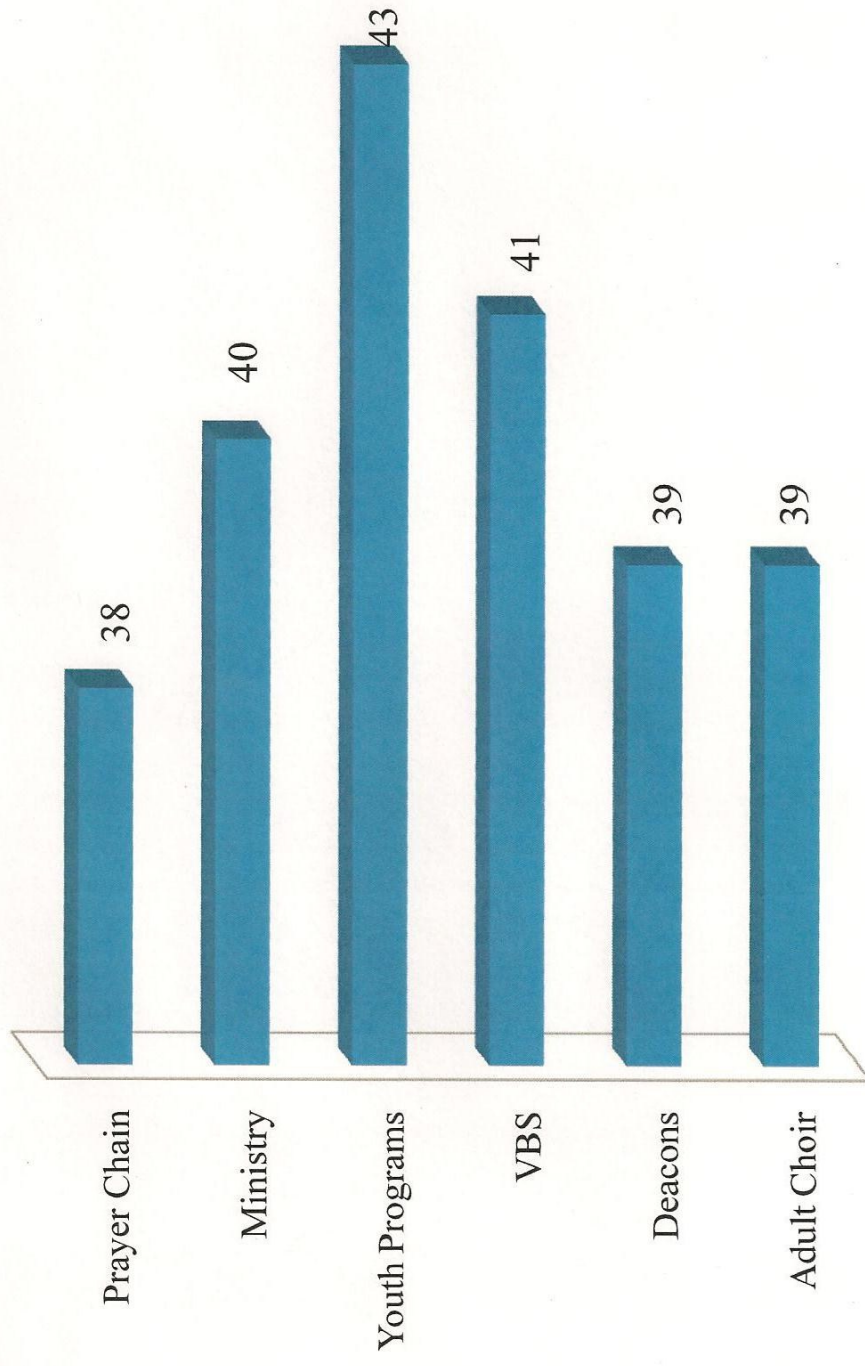
2012 ASSESSMENT SURVEY

MISSION STUDY GROUP

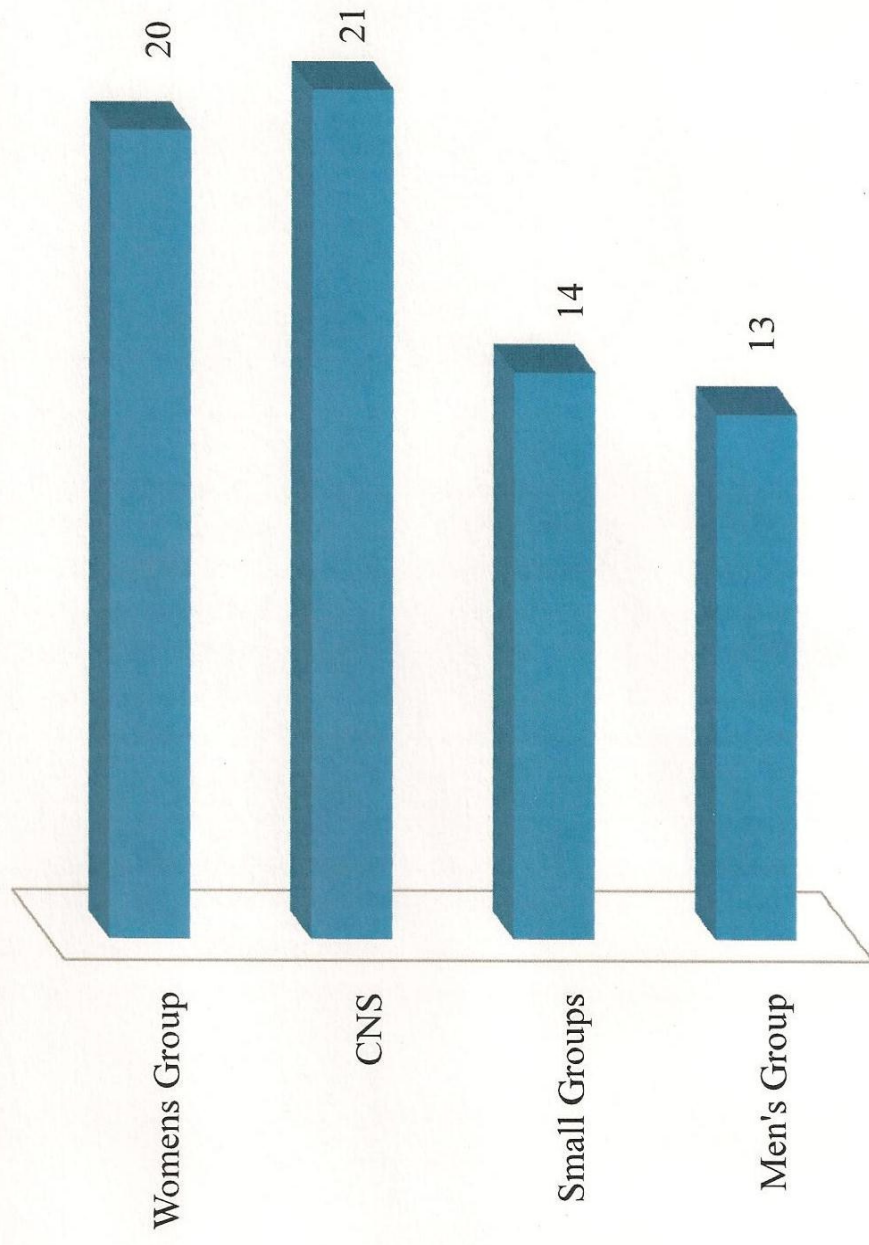
PLAINS SURVEY LOGISTICS

- This survey was sent out to 120 people, including active Plains Church members, non-active Plains Church members and non-members who attend Plains Church.
- We received 51 surveys either partially or entirely completed
- There were 22 surveys that utilized the additional comments section to provide their thoughts about Plains Church

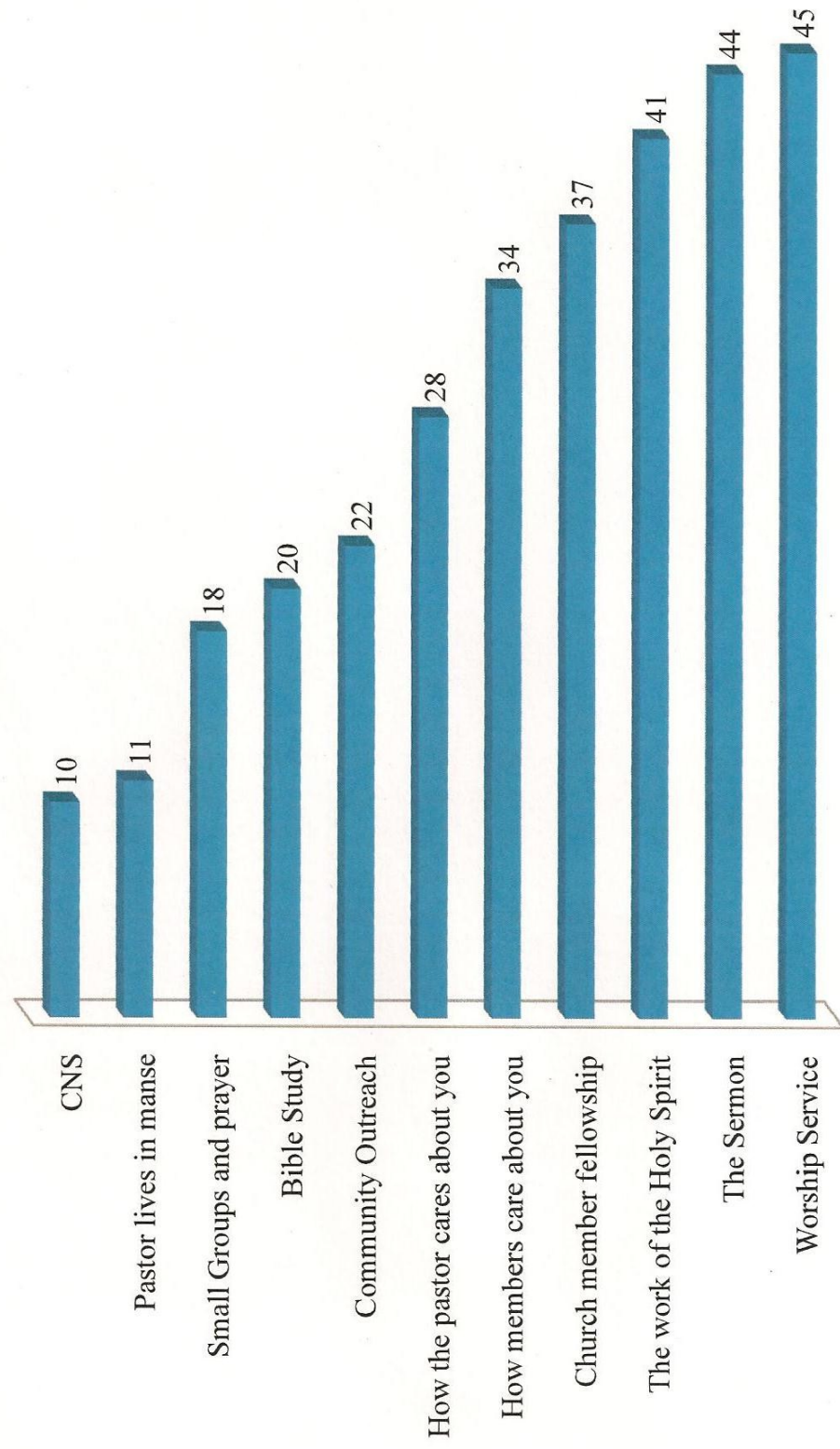
MOST IMPORTANT – HIGH SCORES



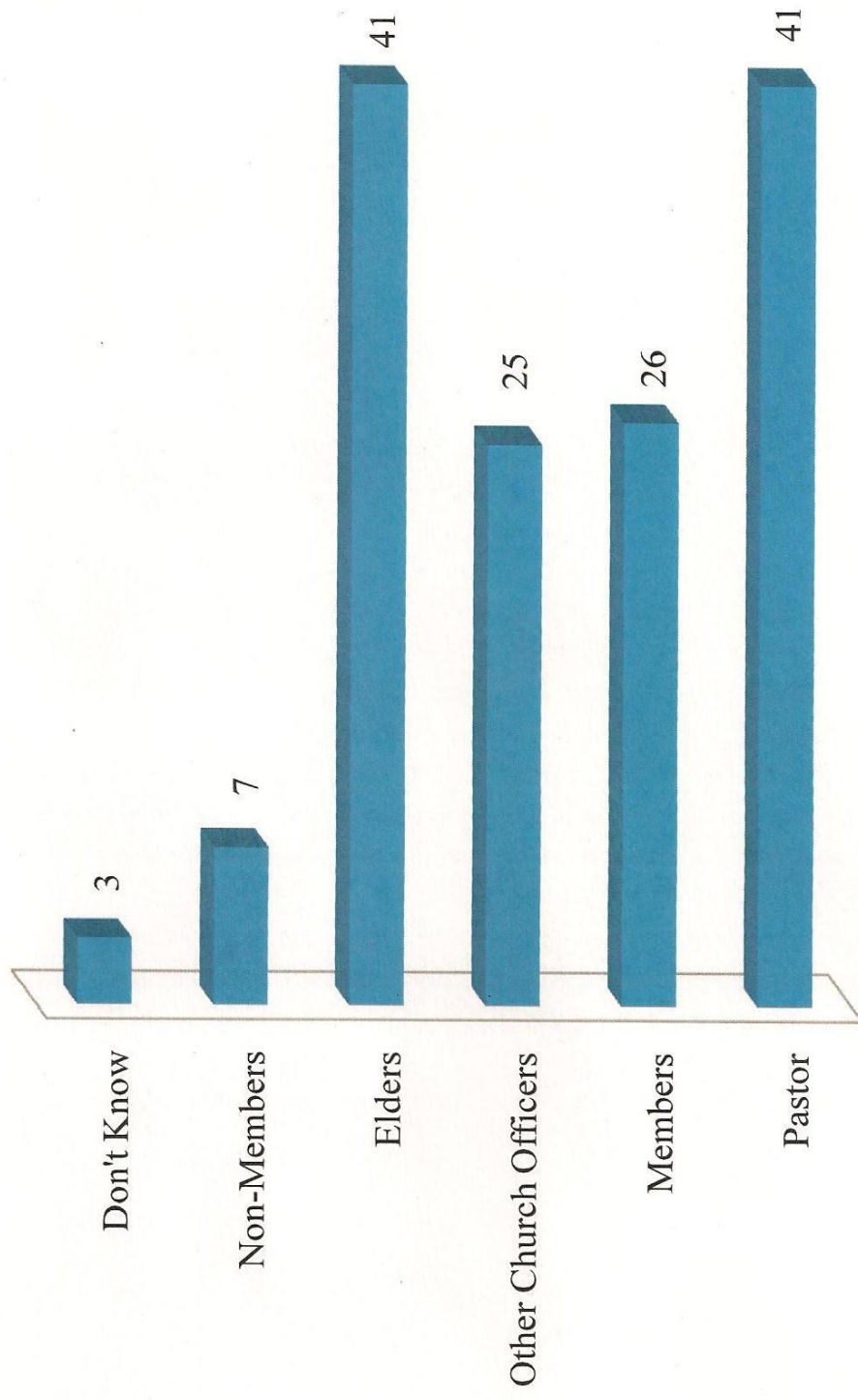
MOST IMPORTANT – LOW SCORES



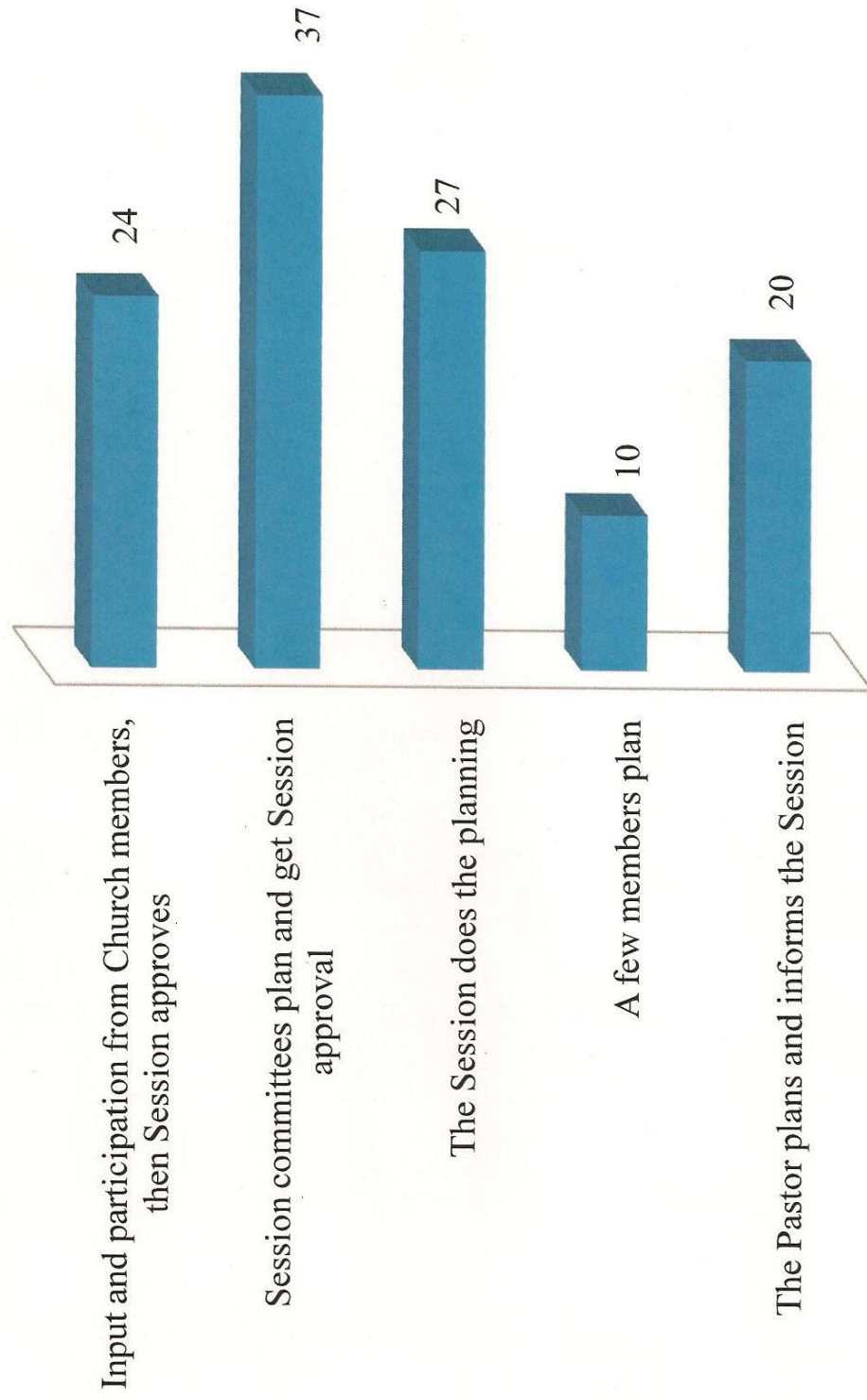
WHAT HAS A LOT OF IMPACT ON YOU AND YOUR CHRISTIAN LIFE?



WHERE DO NEW IDEAS COME FROM AT PLAINS CHURCH?



WHO DOES THE PLANNING AT PLAINS CHURCH?



ADDITIONAL COMMENTS

- Need more programs for the service. Sometimes they are out of them and I and others do not get one.
- It isn't important that the minister live in the manse - but that he/she lives in the area.
- Love Plains Church and its members.
- Children singing is great, also choir does a great job.
- Its critical that our next minister has energy and leadership skills. They also need to be actively involved as part of the Church family. I know the current practice tends toward staying only a few years, but its important to behave in a manner that indicates they want to be a part of us while they are here.

ADDITIONAL COMMENTS

- Check the websites of other area Churches. Plains is sadly lacking and uninviting.
- Pastor preaches from the Bible.
- We need less food for the body and more food for our spirits.
- Other than Sunday Worship don't know what involvement interim has.
- Haven't felt we have had a pastor who really cared about the Church the way he should since Dean Lavender.
- The Pastor should definitely live within 15 minutes of Church.
- The Pastor must live within the district or close to the community they serve. It provides a better understanding and makes them more available.

ADDITIONAL COMMENTS

- The Holy Spirit provides each person with a gift or gifts.
- We are blessed with our children and need to ensure their continued growth with Christ.
- We have needed pastoral participation and guidance for more than 9 years! For too long the pastor has had no connection to the Cranberry community and little interest in truly shepherding our Congregation. I am hopeful that a new pastor will provide us with the spiritual guidance and energy to move forward. Meaningful and well thought out sermons by Kimberly have been a blessing.

ADDITIONAL COMMENTS

- Pastor lives in the Cranberry area
- Childrens' church is helpful and a good idea. Youth group is appreciated.
- Childrens' activities are very important for future well being of the Church. I'm concerned about the "liberal" direction of the PCUSA. Would like to see greater emphasis on missions locally and worldwide - great commission.
- Nursery - should be open at beginning of Church, NOT just after children's message. Please embrace traditional Worship and go over the top with contemporary music. I'd like to see the return of the Apostles' Creed..

ADDITIONAL COMMENTS

- Since we are in the process of picking a new pastor, emphasis should be put on his or her ability to relate to the community in preaching and outreach. Since our past pastors have put too much emphasis on Biblical history preaching (sounds like you're in Seminary school listening to a lecture). People are searching for answers. People who don't know the bible don't understand a history lesson out of it. Make the preaching relative to today and membership will increase.

ADDITIONAL COMMENTS

- Make a real and concrete effort to reach out to church visitors with a Plains Church brochure mailer, a visit from the pastor and a new members class. We also need a definite age (say sixth grade) to have a communicants class. The coffee fellowships should be on the first Sunday of the month. Rather than spread this around to a multitude of different committees, we could have one committee whose job would be coffee fellowship. This is an important outreach and fellowship time for the Church. Also, I think that the handshake and greeting time in the middle of the Service disrupts the flow of the Service. Greeting time is before the start or after the Service. This way we can really take time to greet visitors. One more thing, pew pads. Is anyone collecting these and recording the info?